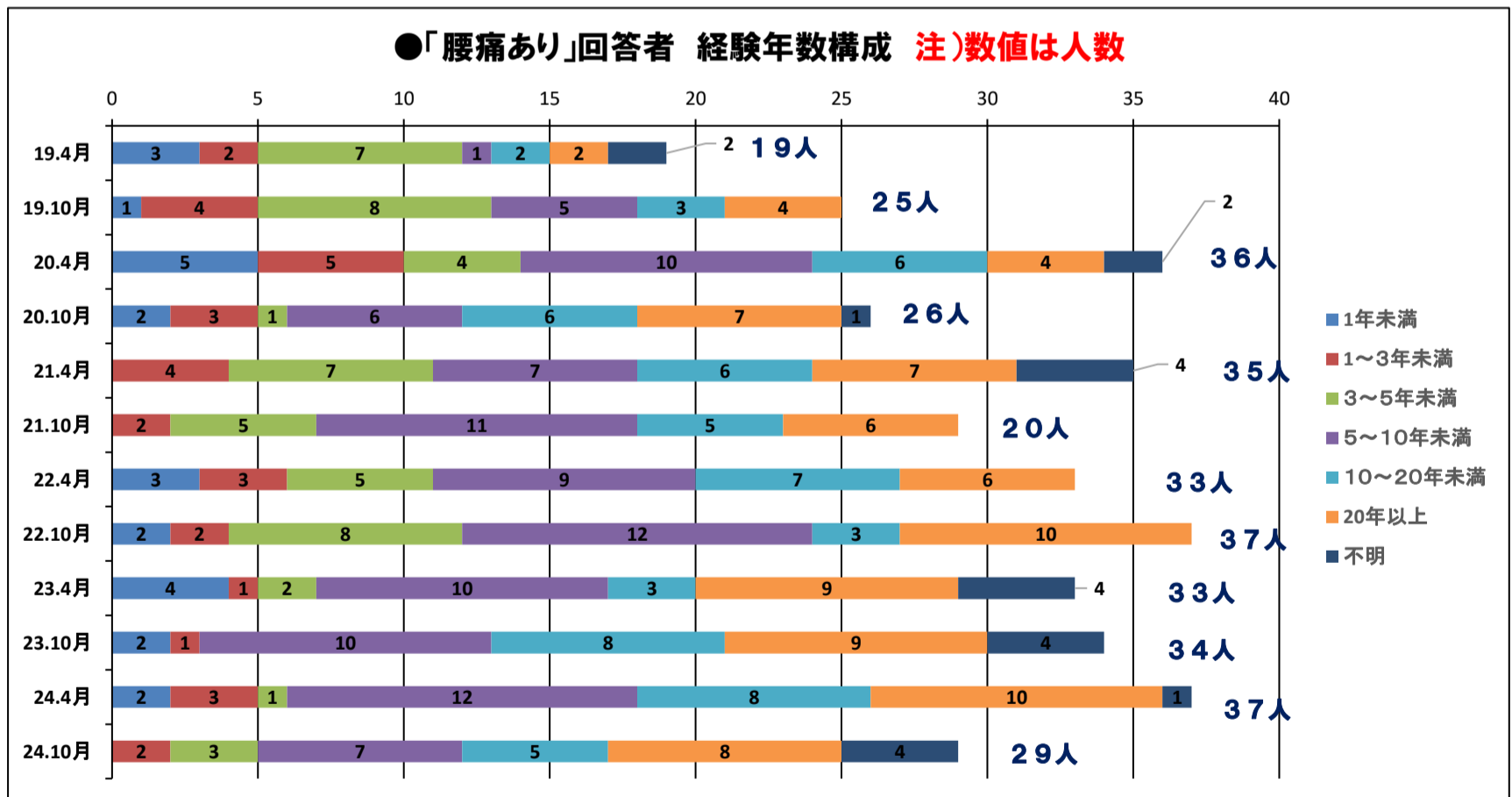
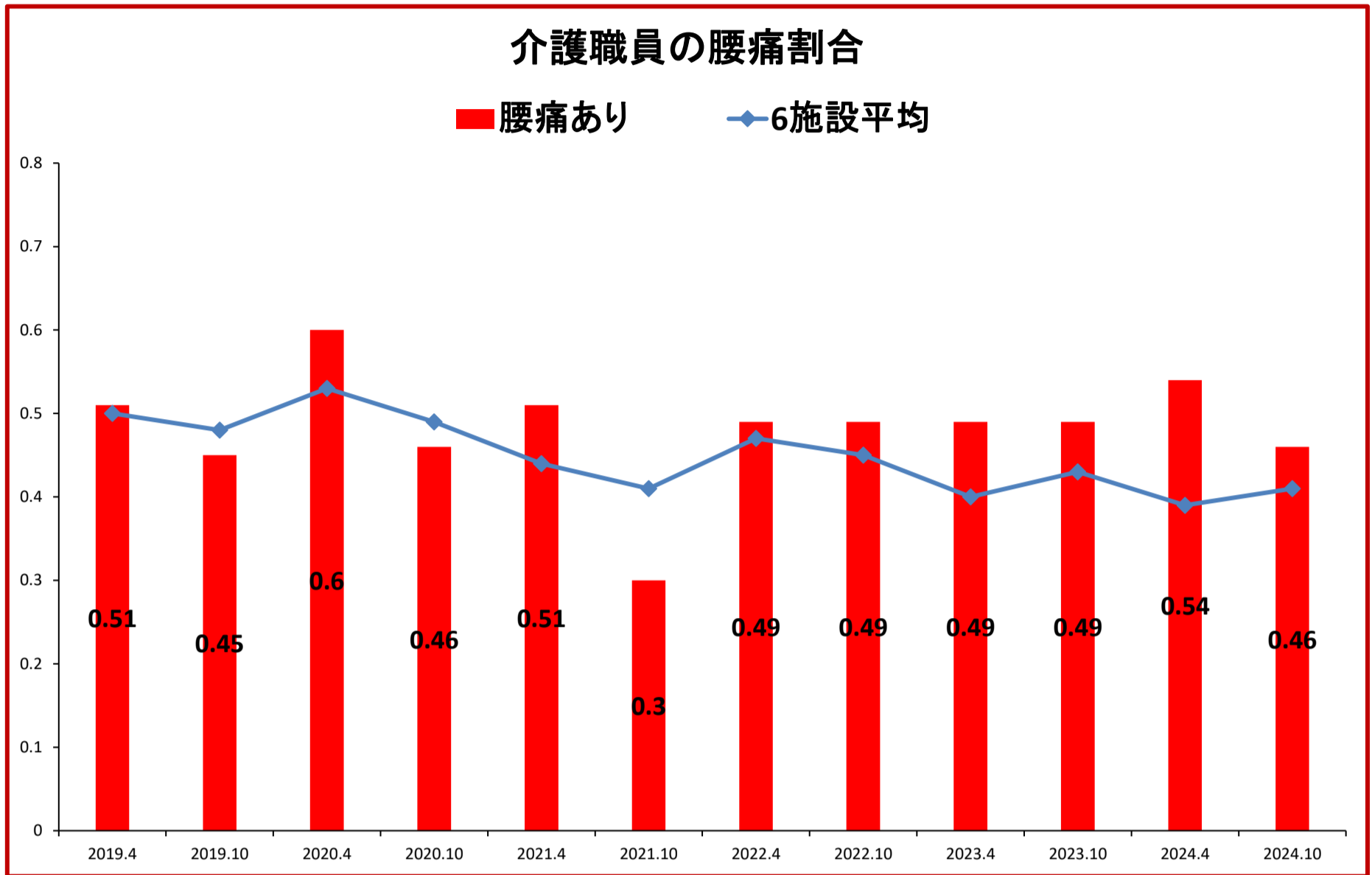
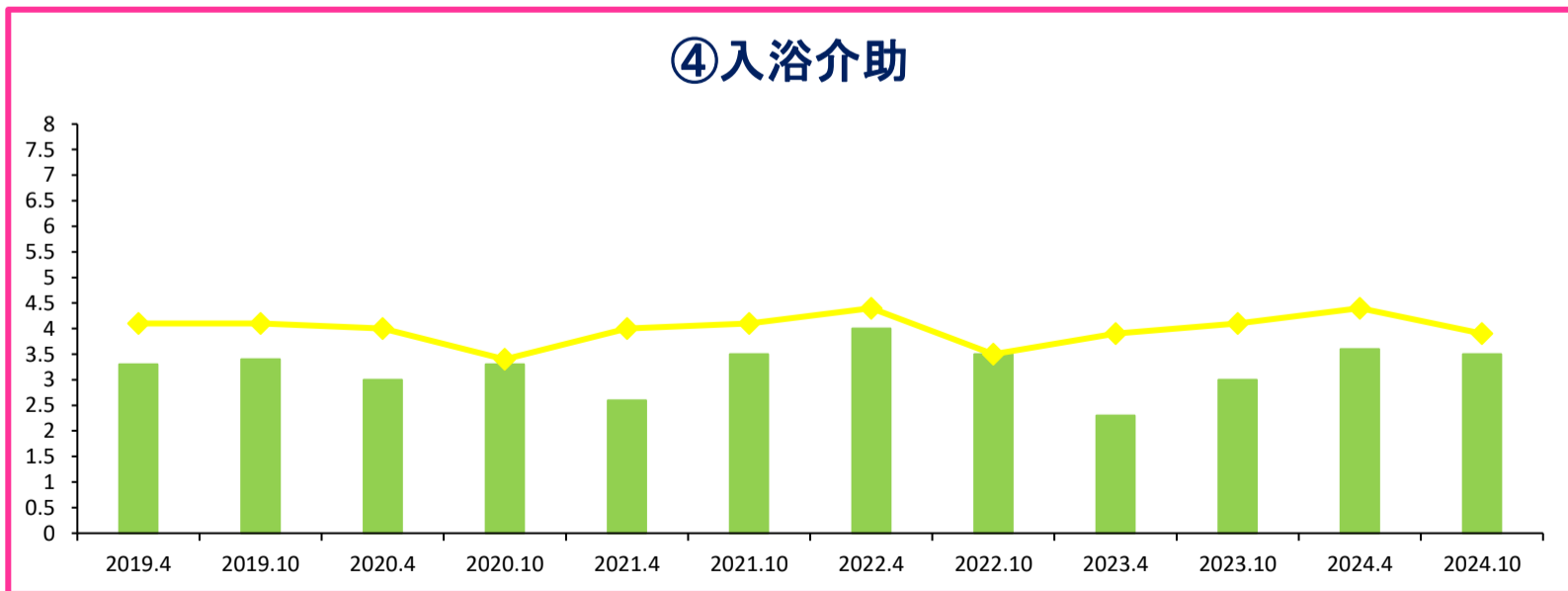
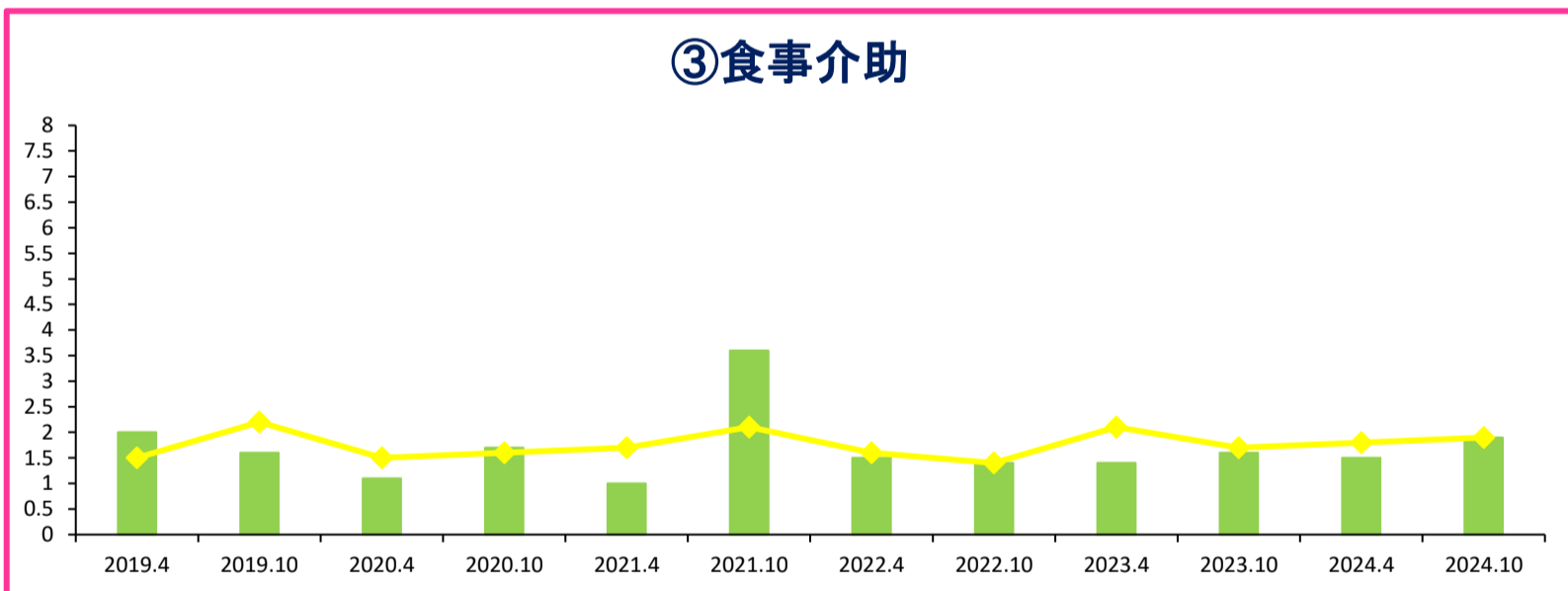
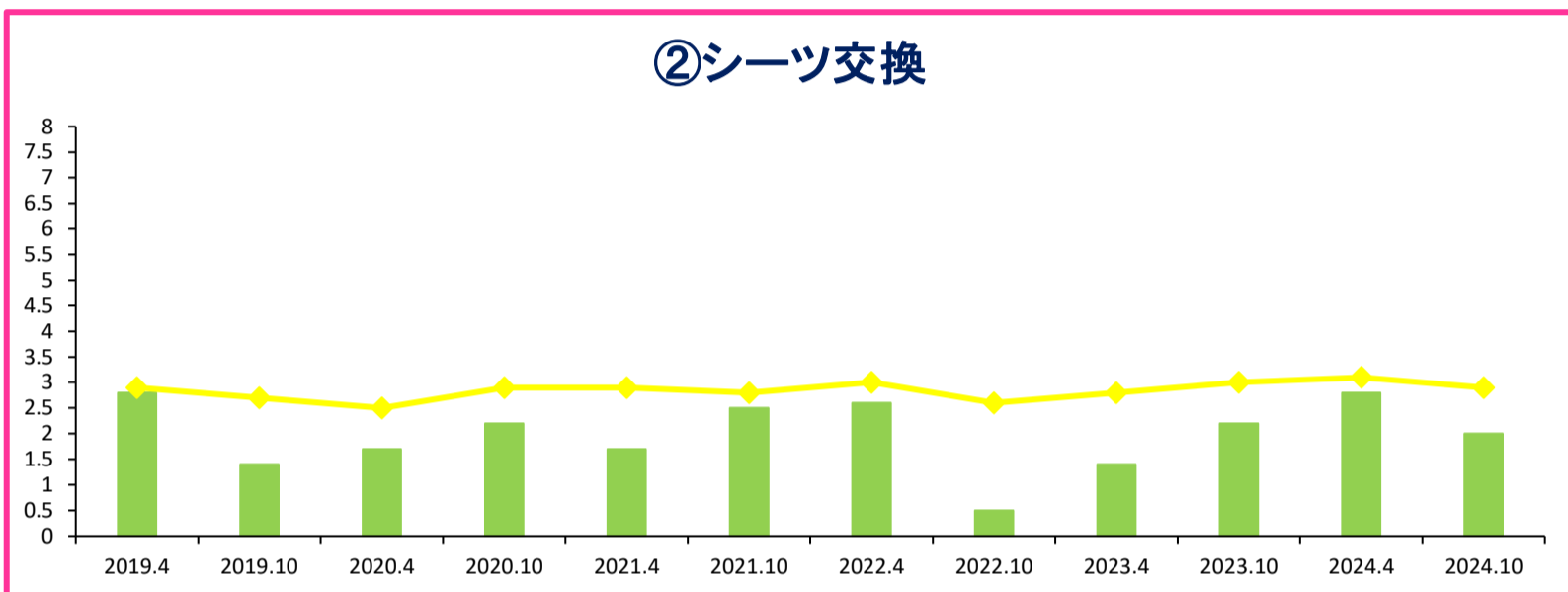
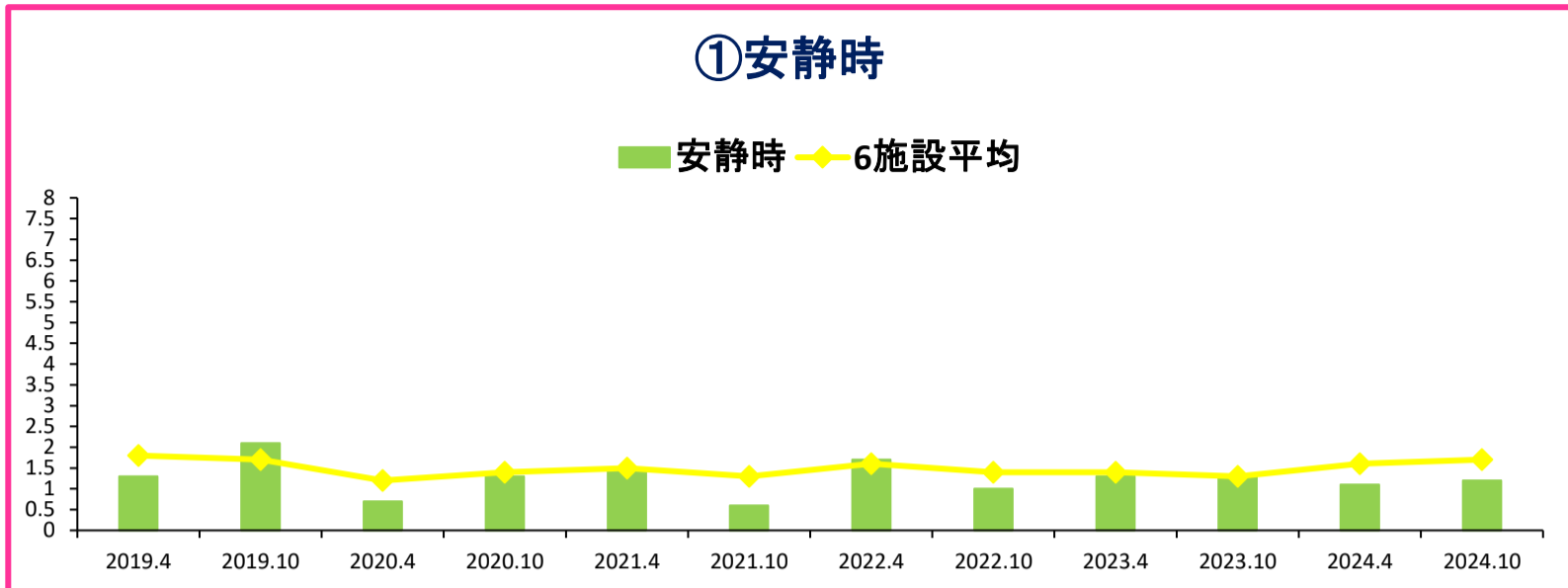


グラフ縦棒は対象施設。折れ線はモデル施設6施設平均

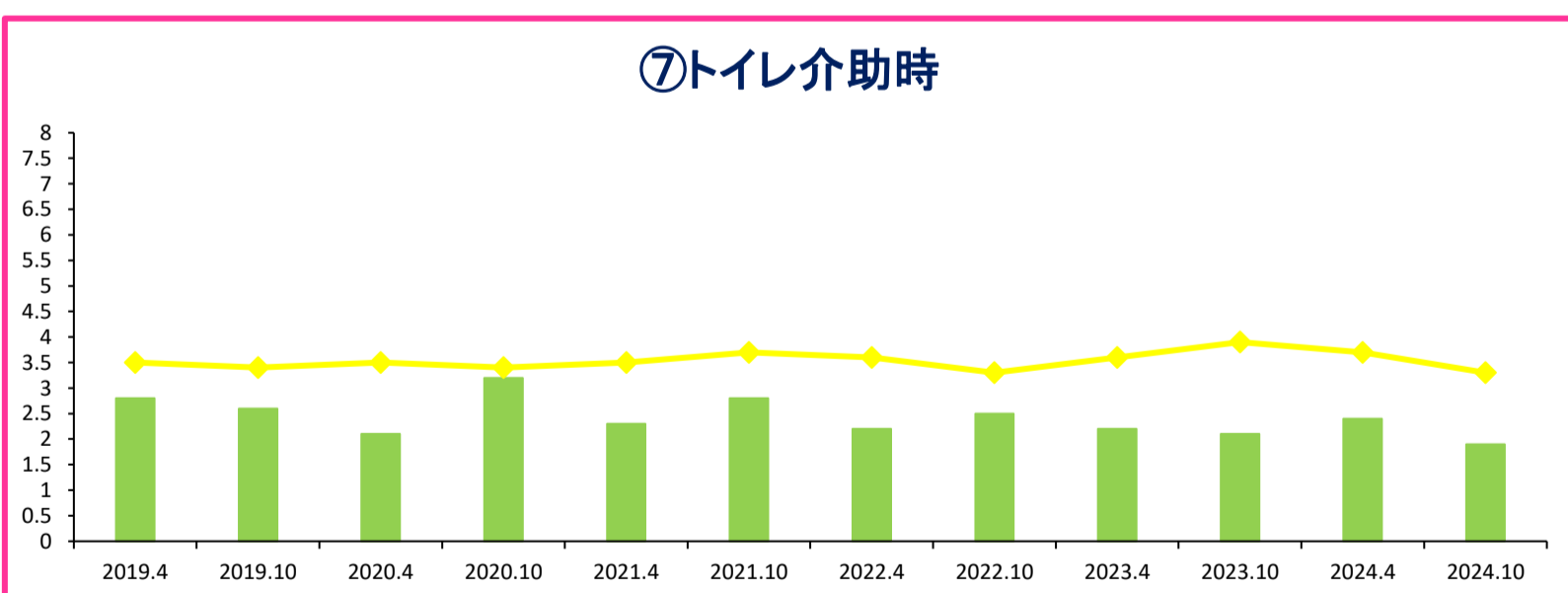
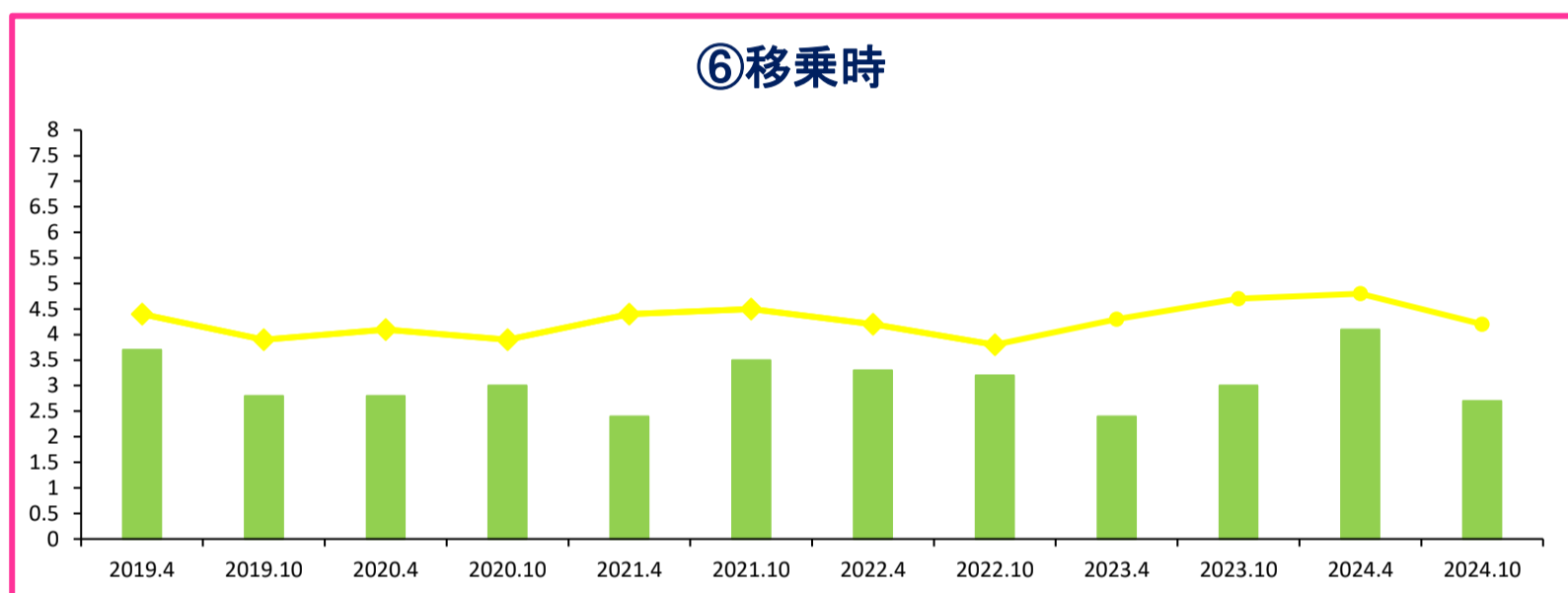
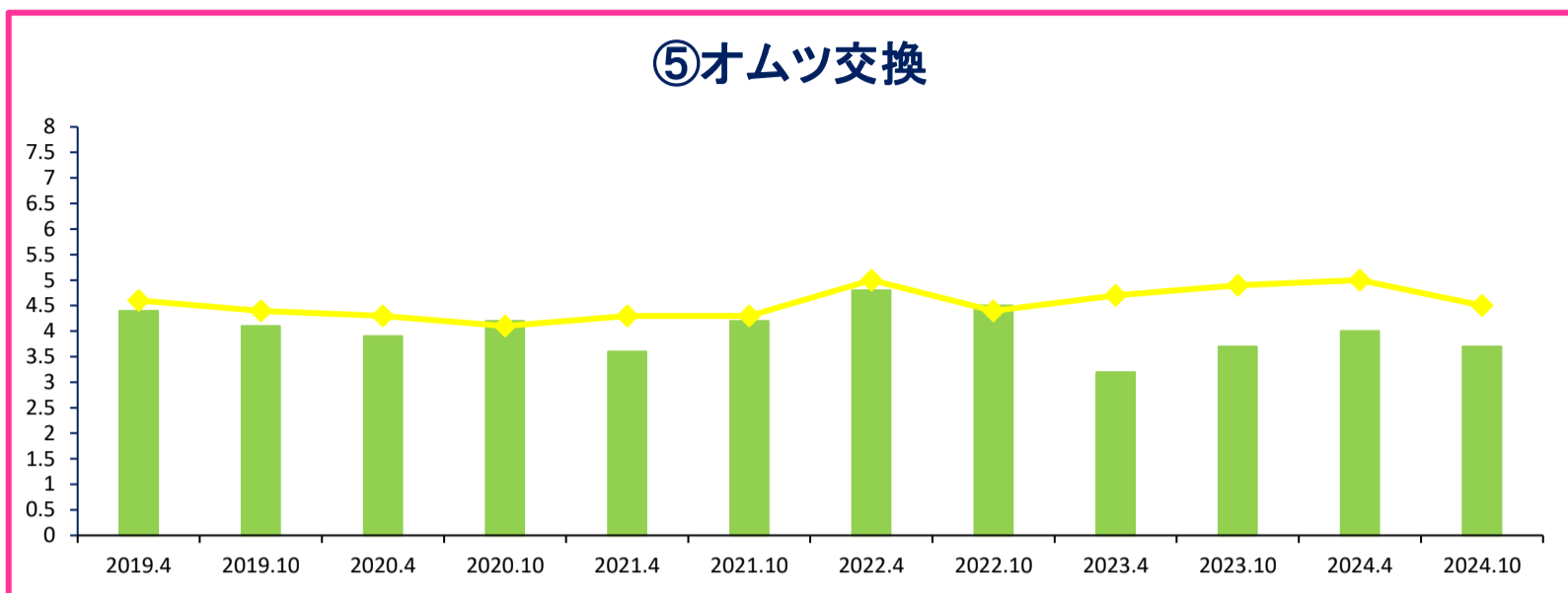


★特別養護老人ホームこほく 腰痛割合時系列データ 2019.4～2024.10 No.2

●腰痛を感じる10の場面の割合(複数回答)



●腰痛を感じる10の場面の割合(複数回答)



★特別養護老人ホームこほく 腰痛割合時系列データ 2019.4～2024.10 No.4

●腰痛を感じる10の場面の割合(複数回答)

